

Key Features:

- Proportional pressure and flow control (0-210 bar, 0-24lpm)
- 4 x bi-directional solenoid valves (11lpm)
- Real time torque feedback and tool turns as standard
- RS232/485, half / full duplex switching via IR remote, auto baud rate detection
- 3000mtr rated

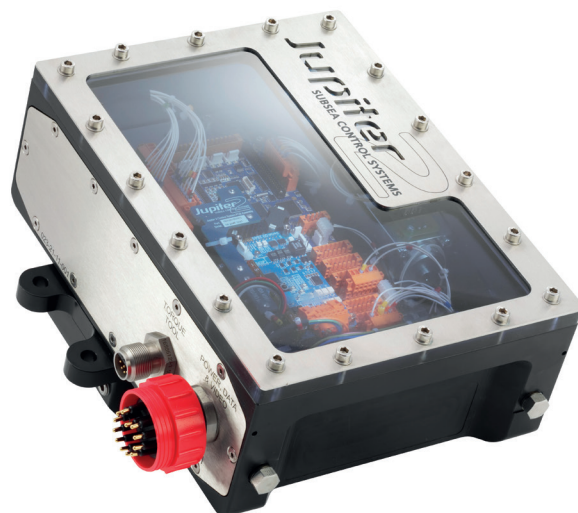
Zetechtics Jupiter 2 Torque Tool Control System

Torque Tools and Accessories

The Jupiter torque tool control system offers an accurate and repeatable solution to client requirements for the control of torque tools in high integrity applications.

The system consists of a single valve pack with a fully integrated proportional control system. The compact unit is suitable for use with a variety of torque tools.

The control system is supplied with all the parts required to operate from a standard PC or laptop using the powerful Jupiter GUI software which allows total user control over the operation of the Jupiter system, system includes a data-logger and features automatic calibration of the torque tools and sensors.



Zetechtics Jupiter 2 Torque Tool Control System

Torque Tools and Accessories



Specifications		
Dimensions	Length	245mm
	Height	325mm
	Width	195mm
Weight	Weight in air	30.5Kg
	Weight in water	16.8Kg
Hyd valve's	1 x NG6 pressure and flow control proportional valve, drives using stable 12 bit constant current drive, pressure control valve has 250 Bar transducer to monitor tool pressure. 4 x NG3 Bi-directional solenoid valves with externally adjustable fully shrouded meter out throttles.	
Sensors	8x sensor inputs with software selectable mode	4-20ma or 0-10V analogue inputs
Analogue sense	4 x 16 bit analogue inputs 4-10ma, 0-10V, strain gauge, etc	12 bit measurement resolution, auto zero available on all inputs, strain gauge inputs feature subsea auto zero to remove large scale offsets directly at the subsea input
Hydraulic	System input pressure	315 bar max
	Tool pressure	2-210 bar
	Tool flow	0-24Lpm (CW and CCW)
	Solenoid ports	8/15Lpm, 5-210 bar externally adjustable flow and pressure
Power		90-125 volts AC, 45-66Hz, 150 watts
Data	RS485 / 232 fully isolated to 1500v, auto baud rate detection QTP/STP copper link or integrated into ROV data hub if available	
Diagnostics	Monitoring of	AC input volts
		AC input current
		Valve volts and current
		Electronic supplies volts and current
		Internal oil temperature
		Hours run meter
		Communication protocol
		Alarm data logger
		Insulation resistance
		4 x water detect points
Auto calibrate	Using a torque analyser with a serial output this feature allows rapid calibration of the strain gauge sensor and pressure control valve	

System Components		
Jupiter 2 TTCS	Deck test cable	Operating manual
Laptop	Rs232 adaptor shunt	Transit case
Power / data / video cable set	World travel adaptor	
USB x rs232 adaptor	Isolated line driver C/W PSU	